

# THE MAINE DRAIN: STORMWATER MANAGEMENT STRATEGIES AND SOLUTIONS

## URBAN IMPAIRED STREAMS

JAMES N. KATSIAFICAS, ESQ.

**PERKINS | THOMPSON**  
ATTORNEYS & COUNSELORS AT LAW

P.O. BOX 426  
PORTLAND, MAINE 04112

# SOURCES OF CLEAN WATER ACT OBLIGATIONS FOR MUNICIPALITIES

**Municipal Clean Water Act (CWA) Obligations include not only:**

- 1. Small MS4 regulation;**
- 2. Combined Sewer Overflows; but also**
- 3. Urban Impaired Streams.**

## SOURCES OF URBAN IMPAIRED STREAM OBLIGATIONS

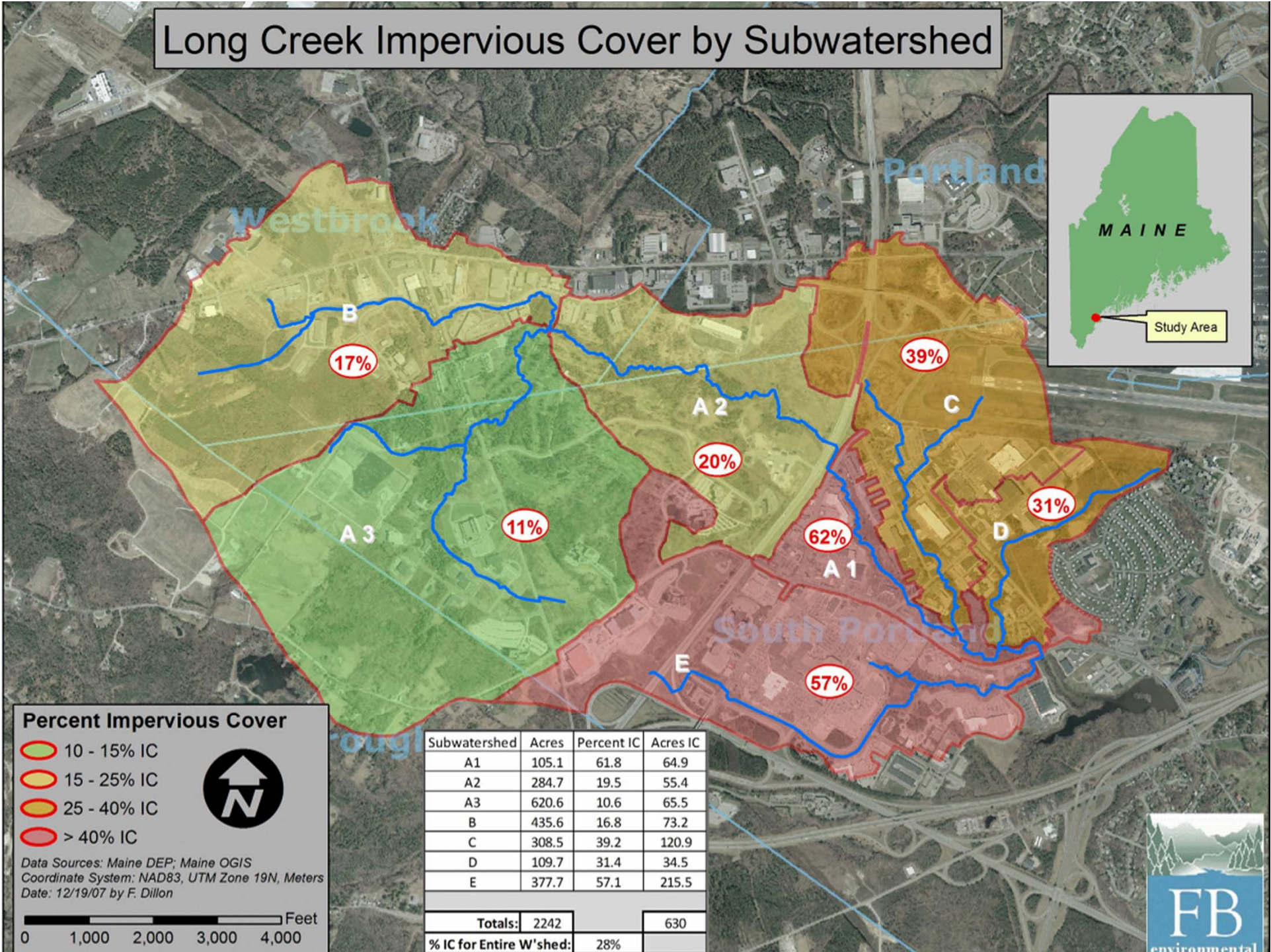
**Urban Impaired Streams obligations arise out of:**

- 1. 1972 CWA Amendments (Section 303(d) list and TMDL);**
- 2. 1987 CWA (Stormwater) Amendments (Residual Designation Authority);**
- 3. Small MS4 permit conditions; and**
- 4. Threat of citizen suits and petitions.**





# Long Creek Impervious Cover by Subwatershed

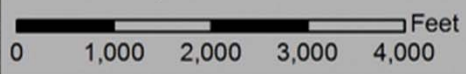


## Percent Impervious Cover

- 10 - 15% IC
- 15 - 25% IC
- 25 - 40% IC
- > 40% IC



Data Sources: Maine DEP; Maine OGIS  
 Coordinate System: NAD83, UTM Zone 19N, Meters  
 Date: 12/19/07 by F. Dillon



Subwatershed	Acres	Percent IC	Acres IC
A1	105.1	61.8	64.9
A2	284.7	19.5	55.4
A3	620.6	10.6	65.5
B	435.6	16.8	73.2
C	308.5	39.2	120.9
D	109.7	31.4	34.5
E	377.7	57.1	215.5
<b>Totals:</b>	<b>2242</b>		<b>630</b>
<b>% IC for Entire W'shed:</b>		<b>28%</b>	



## URBAN IMPAIRED STREAM EXAMPLES IN MAINE

### **A. Long Creek Watershed. Located in Portland, South Portland, Scarborough and Westbrook.**

- **3.45 square miles in Maine Mall area – commercial and industrial uses, jetport, interstate highway, parking lots, shopping centers – much impervious area.**
- **Long Creek does not meet State water quality standards: low dissolved O<sub>2</sub>; heavy metals; high suspended solids and chlorides.**
- **Threat of enforcement action and of citizen action resulted in collaborative action by public and private landowners.**
- **First in nation use of RDA to require stream restoration.**



## URBAN IMPAIRED STREAM EXAMPLES IN MAINE

- **Interlocal Agreement and nonprofit corporation to create Long Creek Watershed Management District.**
- **Over 110 public and private landowners implementing a Long Creek Watershed Management Plan to restore the urban impaired stream within ten years.**
- **\$14 million cost shared by annual assessments; remediation capital projects focused on most cost-effective BMPs.**
- **Potential model for urban impaired stream remediation.**

## URBAN IMPAIRED STREAM EXAMPLES IN MAINE

### **B. Other streams and models –municipal restoration:**

- 1. Penjajawoc Marsh, Bangor**
- 2. Capisic Brook, Portland**
- 3. Red Brook, South Portland and Scarborough**

**Finance remediation through tax base? Separate stormwater charge for this and other stormwater costs? Separate stormwater utility?**



# URBAN IMPAIRED STREAM RESTORATION

## **Urban Impaired Stream Restoration Strategies:**

- 1. Low Impact Development**
- 2. Onsite infiltration of stormwater**
- 3. Reduced impervious surface area**
- 4. Proactive steps to protect streams before become urban impaired streams**