



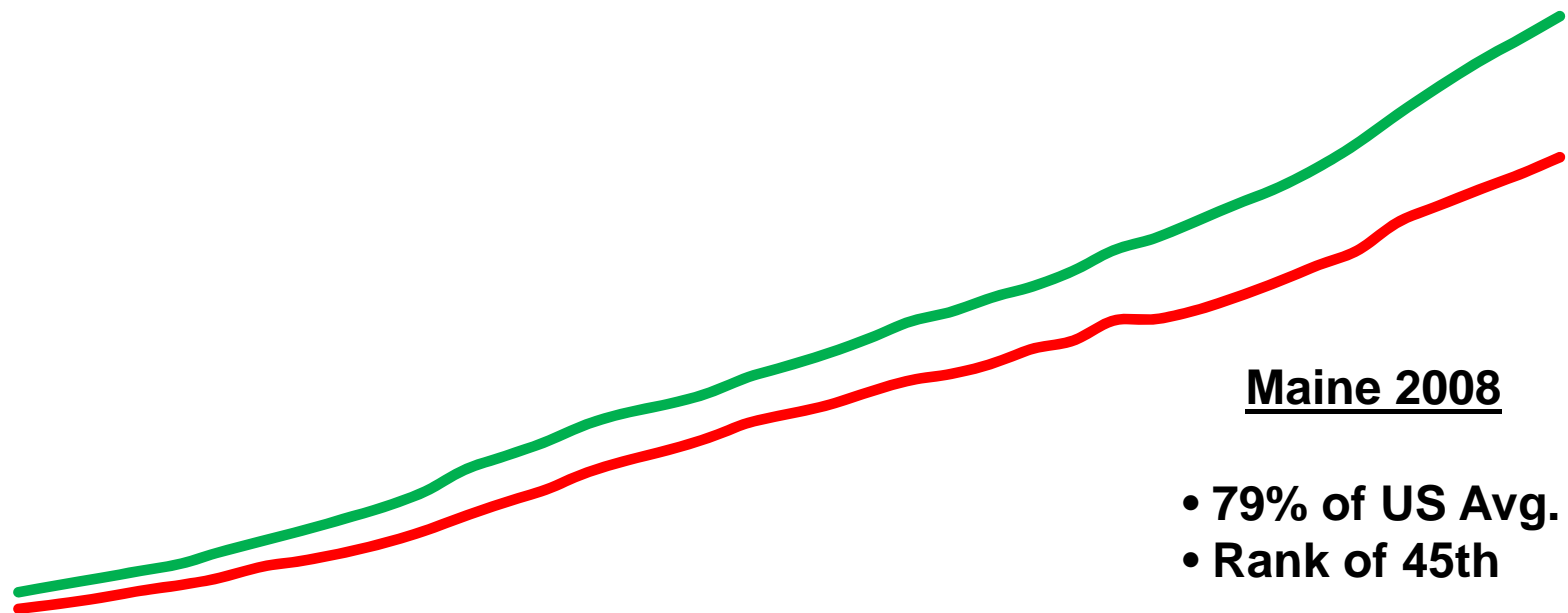
A Partnership:

MAINE
S T A T E
CHAMBER
of
COMMERCE

MAINE DEVELOPMENT FOUNDATION

Value Added per Worker, All Industries U.S. and Maine 1970-2008

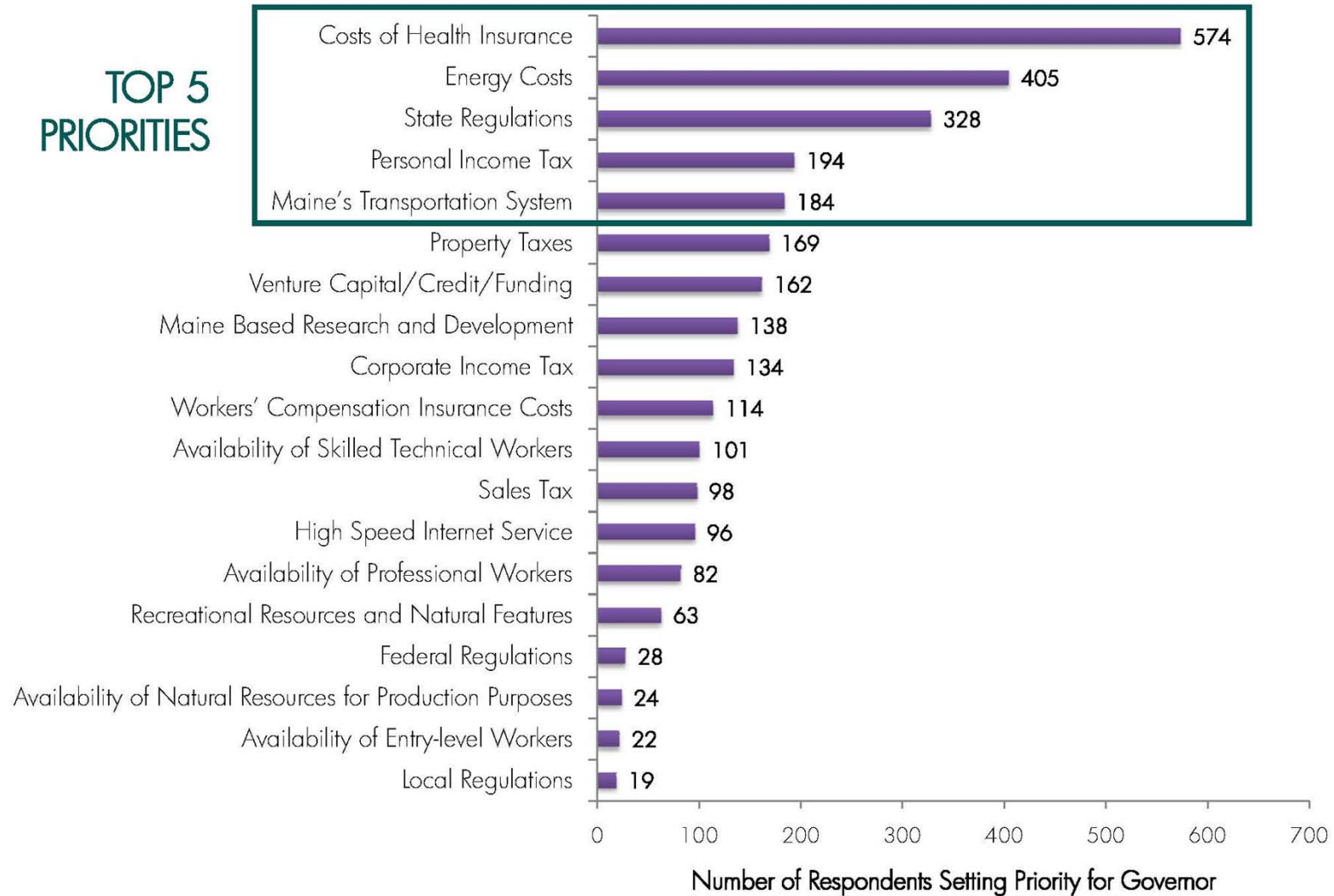
— US — Maine



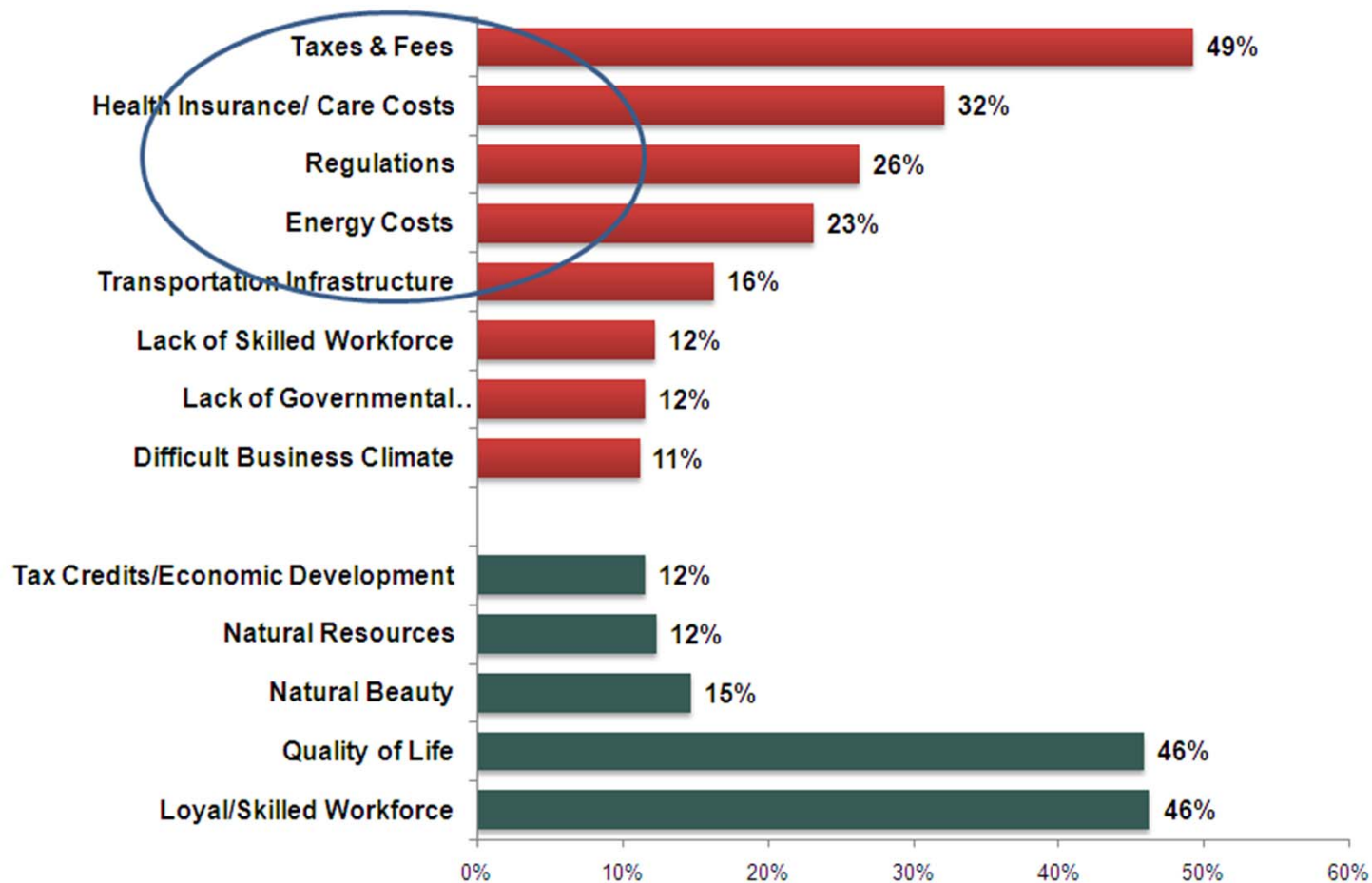
Source: Bureau of Economic Analysis, Regional Economic Accounts

PRIORITY

TOP 5 PRIORITIES

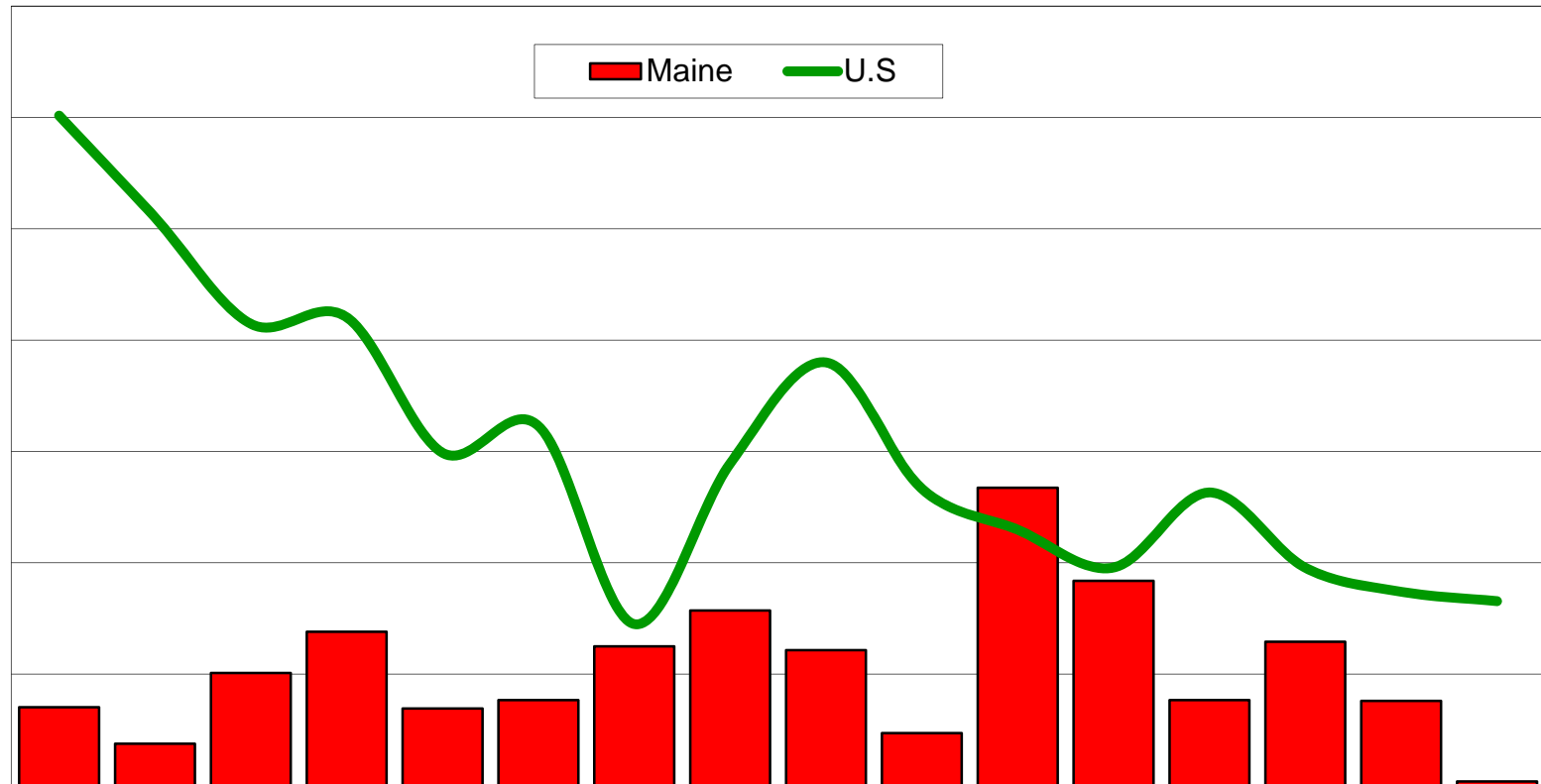


FOCUS



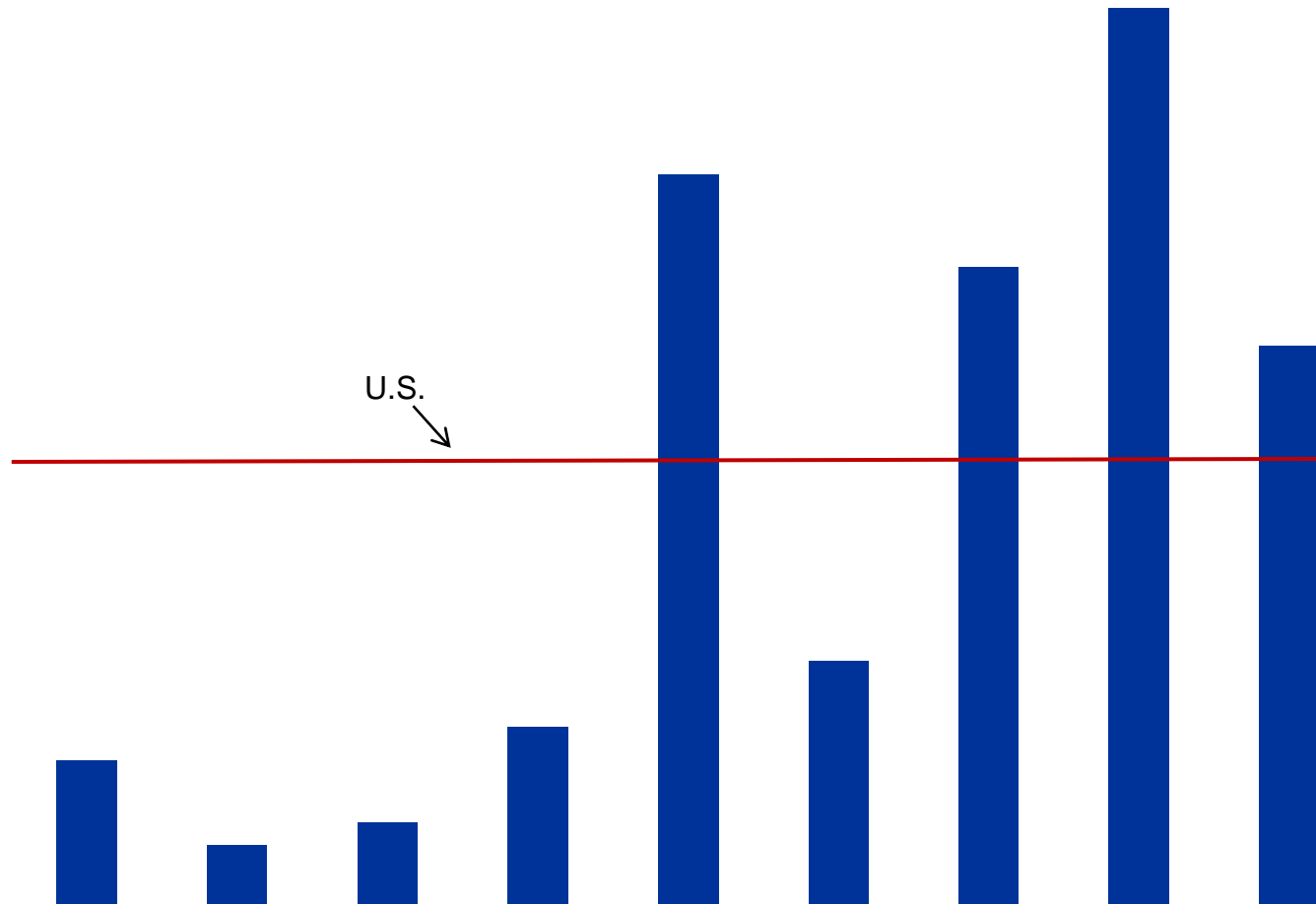
This is an open-ended question. The responses are offered by respondents. Topics not asked of every respondent
Source: Maine Development Foundation/Maine State Chamber of Commerce Web Survey with Business Leaders February 2010, n=1,039.

Actual and Projected Decennial Population Increases Maine and U.S., 1870-2030



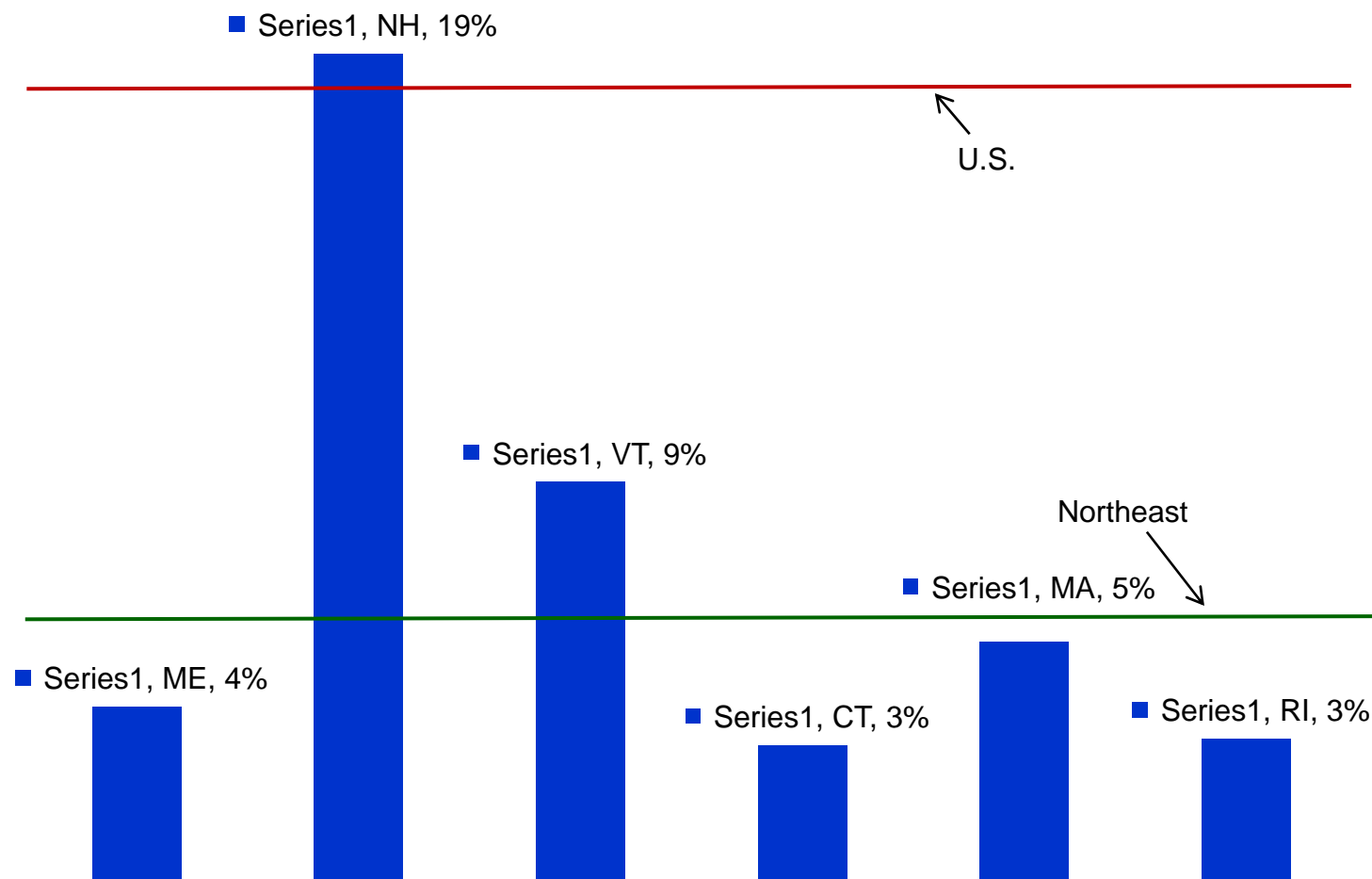
Source: U.S. Census Bureau

Projected Growth Rate, U.S. and Regions, 2010 - 2030



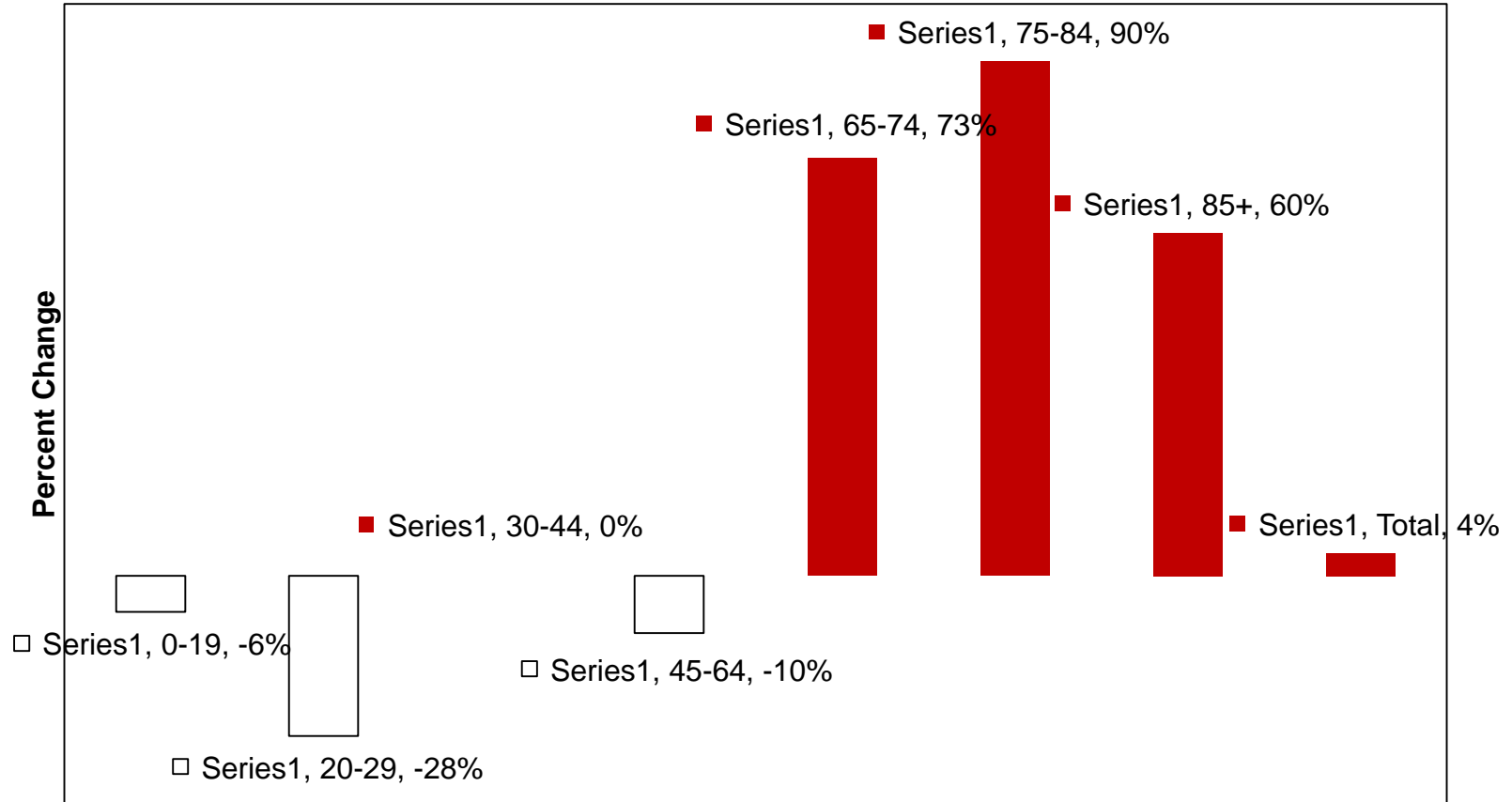
Source: U.S. Census Bureau, U.S. Population Projections

Projected Population Growth Rates, Maine, New England States, and U.S. Average, 2010 - 2030



Source: U.S. Census Bureau, U.S. Population Projections

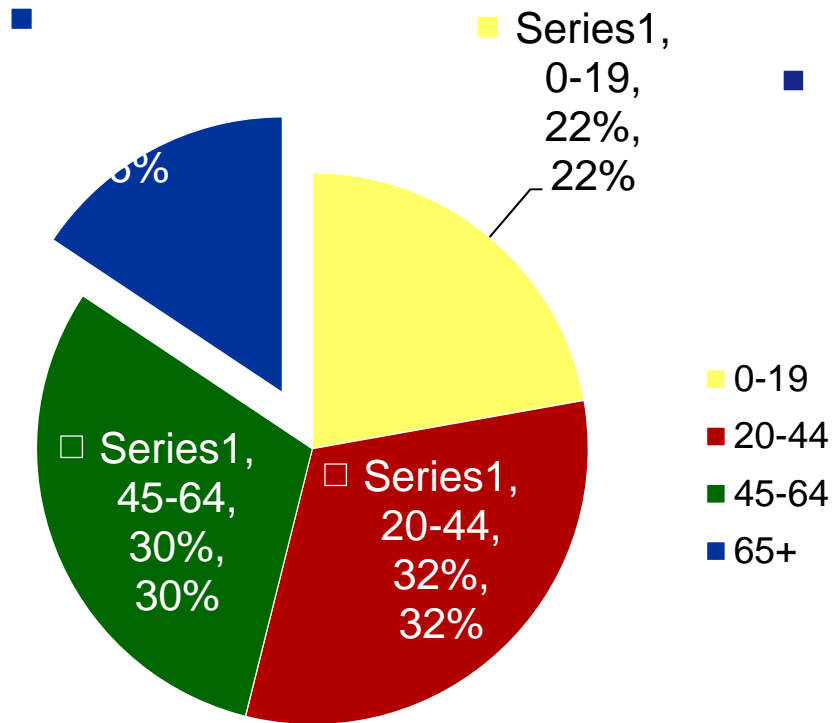
Projected Percent Maine Population Change
by Age Cohort, 2010-2030



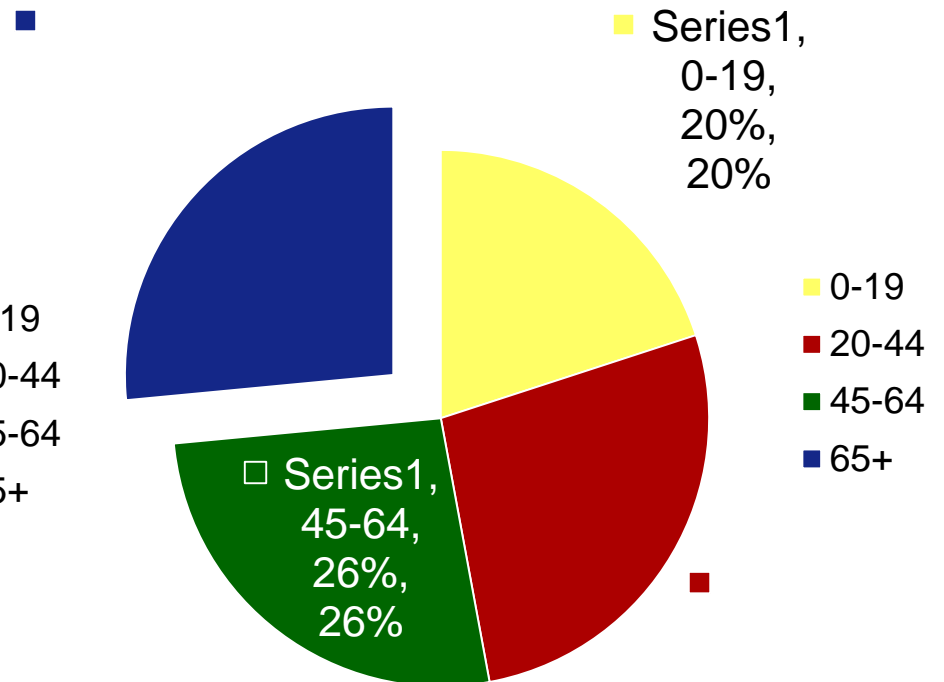
Source: U.S. Census Bureau

Maine

Age Cohort by Percent, 2010

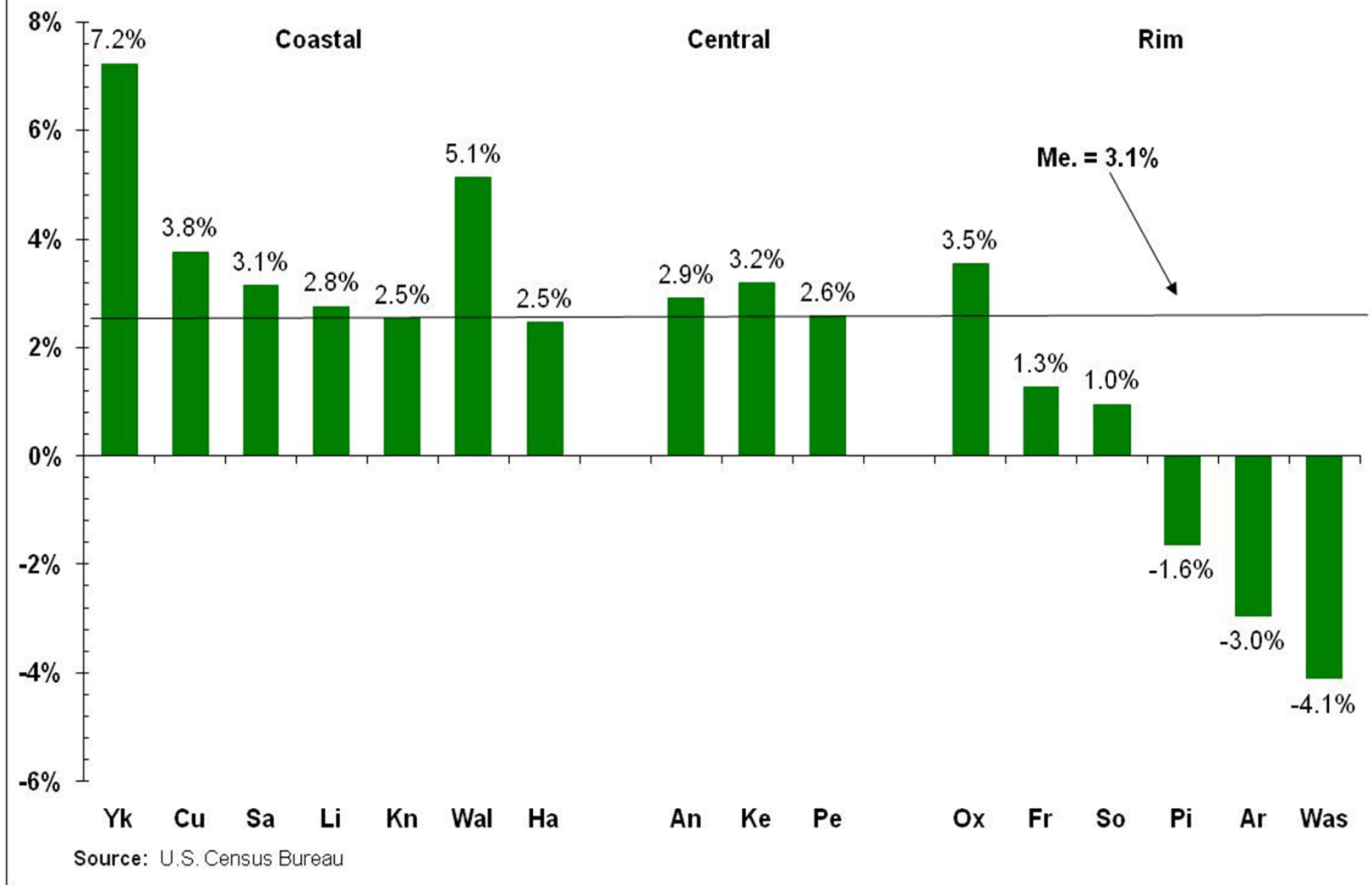


Age Cohort by Percent, 2030

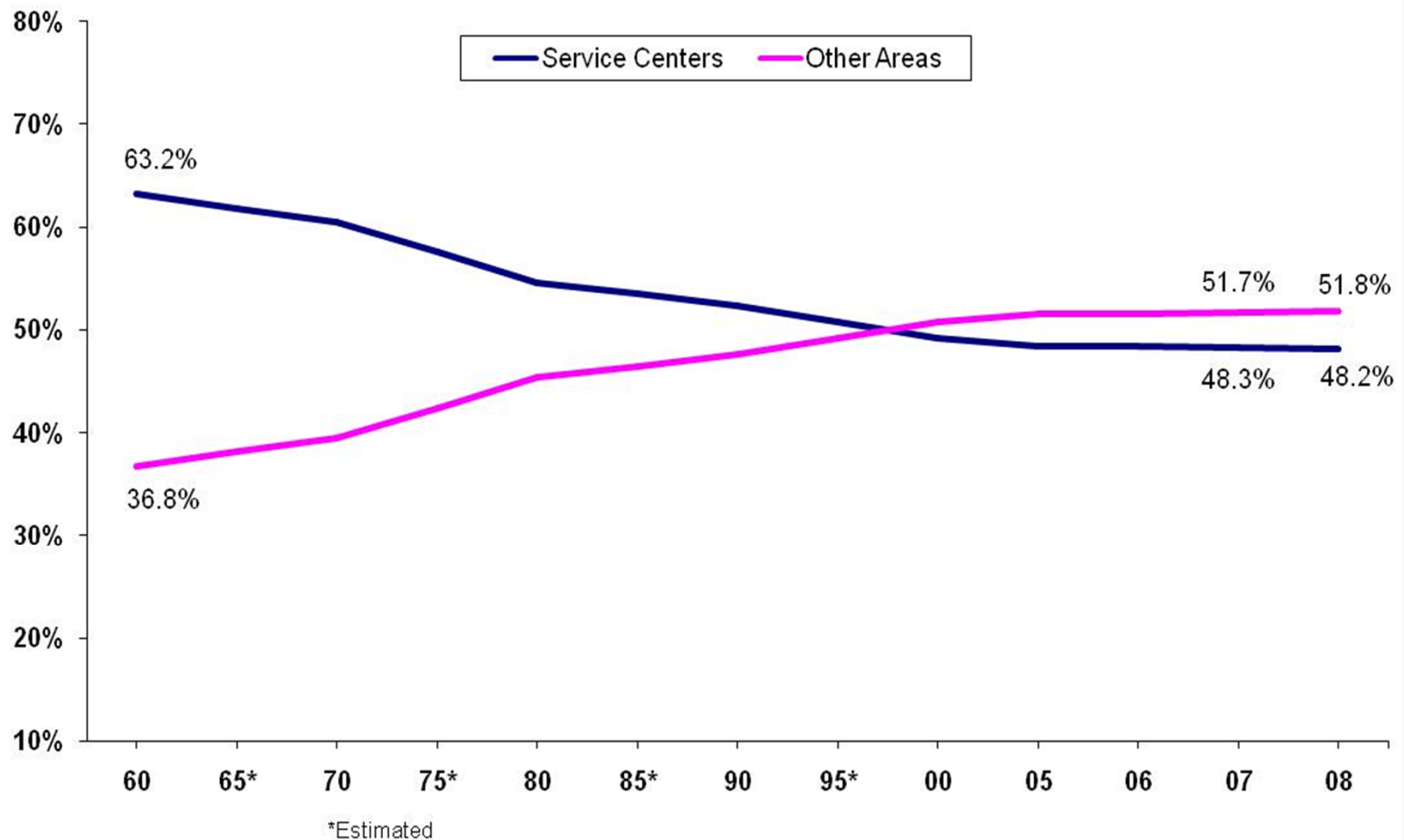


Source: U.S. Census Bureau Population Projections

Change in Population, Maine Counties, 2000-2008

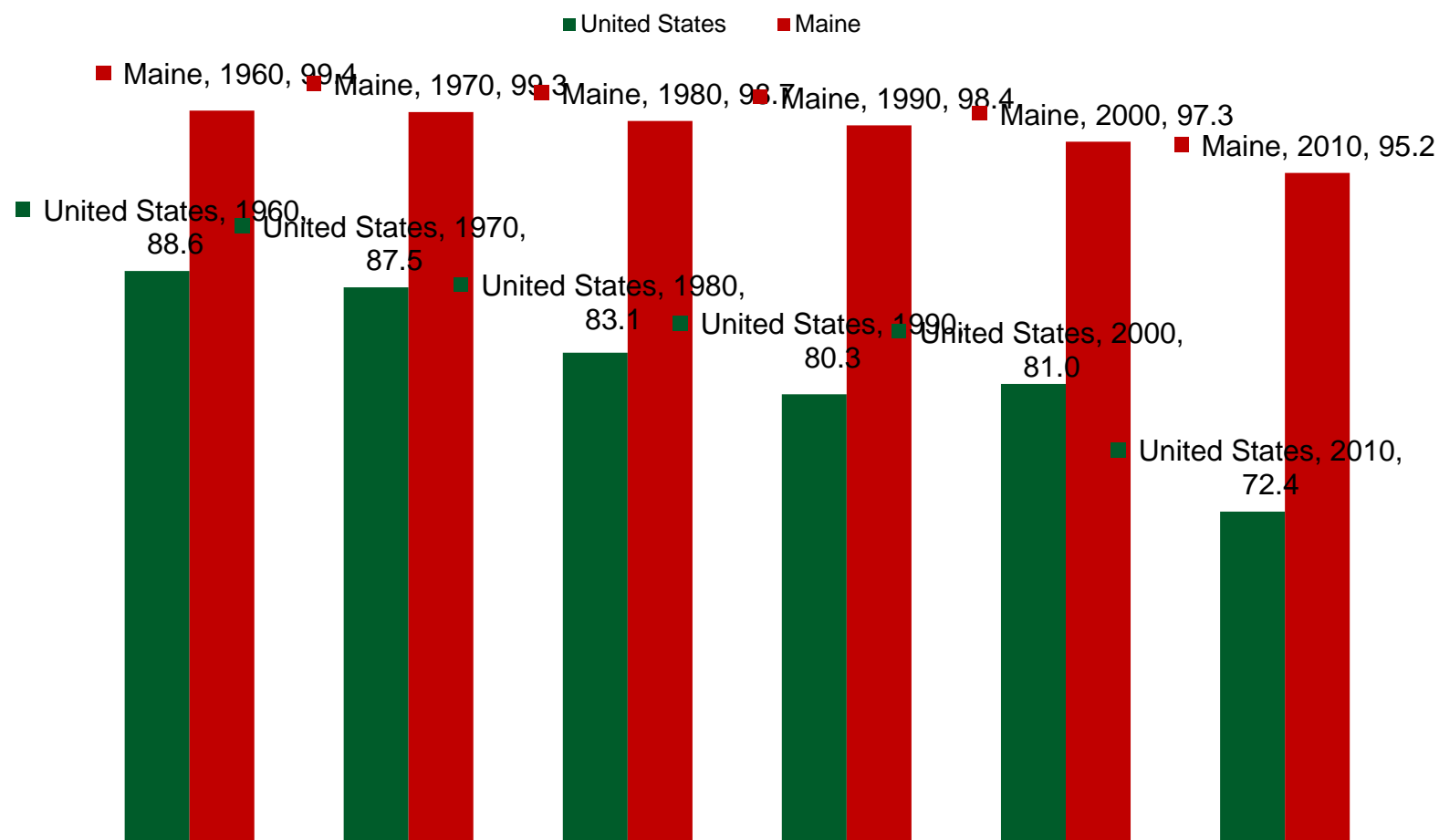


Percent of Maine's Population Living in Regional Service Centers (Compared to Other Municipalities) 1960-2008



Source: Maine State Planning Office

% White Population, Maine and U.S., 1960 - 2010

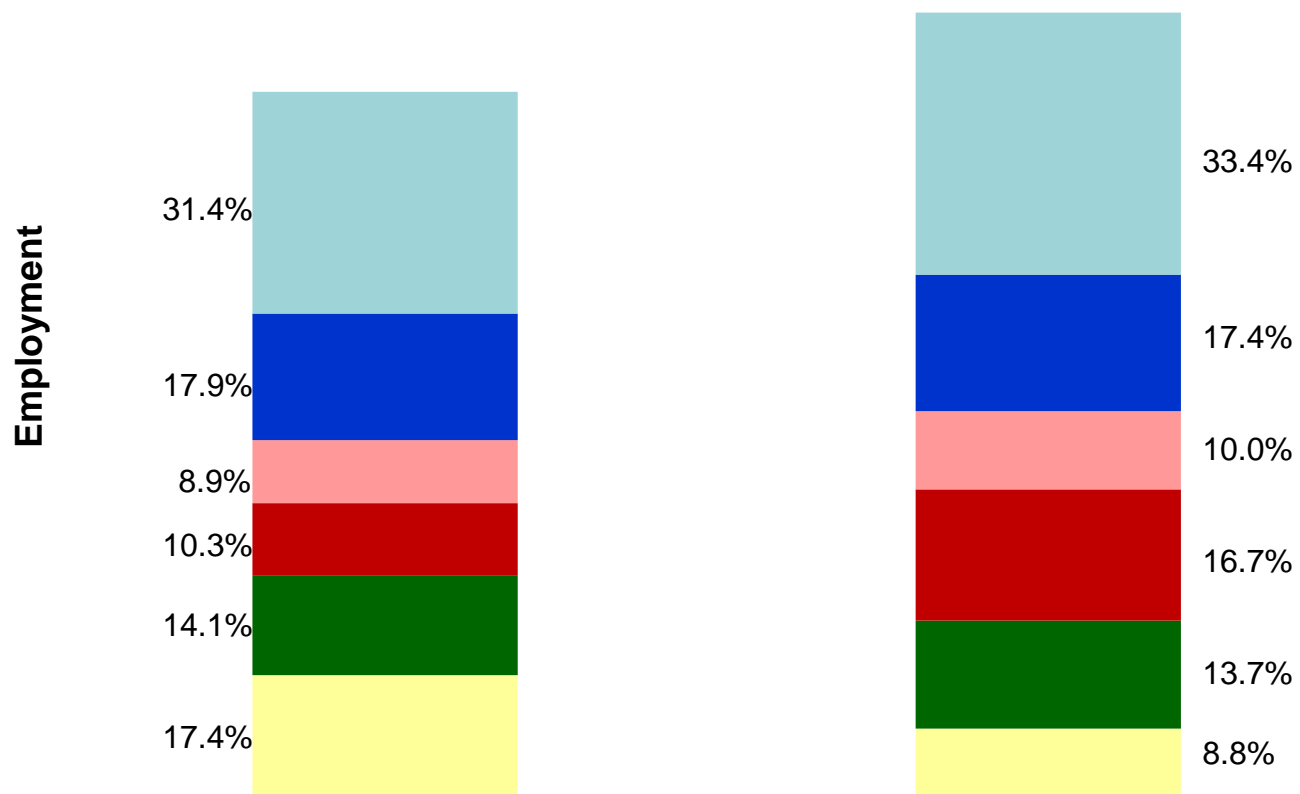


Source: U.S. Census Bureau, Demographic Trends in the 20th Century and Census 2010

Note: Date reflects changes in U.S. Census Bureau methodology over time

Maine's Wage & Salary Employment by Sector

■ Manufacturing
 ■ Retail Trade
 ■ Health Care
 ■ Leisure
 ■ Government
 ■ Other Industries



Source: Maine Department of Labor, Center for Workforce Research and Information