

MaineDOT's Family of Plans Village Partnership Initiative

2050

Maine's Long-Range
Transportation Plan



presented to

MEREDA's Spring Conference

May 24, 2022

presented by

Dale F. Doughty, MaineDOT Bureau of Planning

dale.doughty@maine.gov

(207) 592-6807



MaineDOT

Project Teams for our Family of Plans

- **Long-Range Transportation Plan (LRTP)**
 - » Jennifer Grant, MaineDOT
- **Maine State Rail Plan (MSRP)**
 - » Nathan Howard, MaineDOT
- **Statewide Active Transportation Plan (SATP)**
 - » Ian Gorecki, MaineDOT
- **Statewide Strategic Transit Plan (SSTP)**
 - » Ryan Neale, MaineDOT
- **Statewide Aviation System Plan, Phase II**



Maine's Transportation System

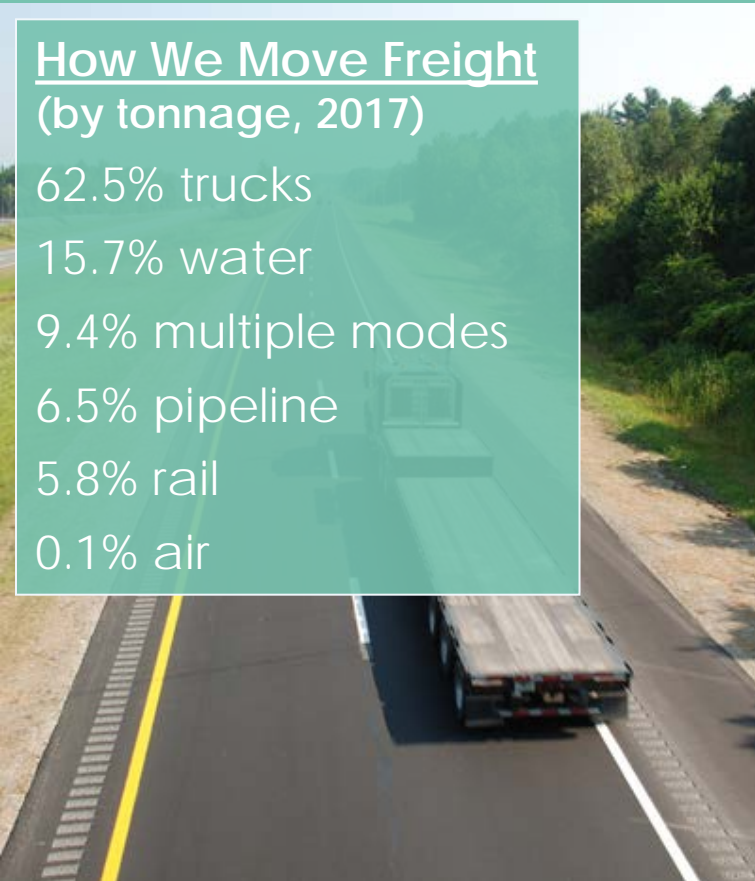
- 8,800 miles of state-jurisdiction highways, in addition to local roads, carrying over 15.1 billion vehicle-miles-traveled in 2019*
- Over 2,700 state-owned bridges and minor spans; over 3,800 bridges and minor spans statewide
- Transit operators with bus and ferry services provided over 7 million rides in 2019*
- Downeaster passenger rail service provided over 500,000 rides in 2019*
- 492 miles of state-owned rail and 1,390 miles of privately-owned rail
- 29 general aviation airports and 6 commercial airports
- 3 deep-water seaports
- Over 500 miles of trails



Maine's Transportation System

How We Move Freight (by tonnage, 2017)

62.5% trucks
15.7% water
9.4% multiple modes
6.5% pipeline
5.8% rail
0.1% air



How We Commute (2019)

78.8% drive alone
9.3% carpool
0.6% transit
4.3% bike/walk
5.9% work from home
1.1% other



Draft Vision and Goals Highlights by Mode

envision a transit system that utilizes innovations and technologies to improve service and reduce environmental impacts, expands mobility options, and improves quality of life for customers and communities

envision a freight rail system that enables Maine businesses to reach current and future markets and sources with timely and reliable services

envision a passenger rail system that provides safe, fast, and reliable intercity and commuter rail passenger services

envision airports that enhance the quality of life; provide critical services; and support local, regional, and statewide economies

envision a highway and bridge network where roads have a purpose and identity with standardization of features that match customer expectations

envision an active transportation system that is accessible to all Mainers and visitors and supports and improves people's ability to access jobs, education, businesses, healthcare, and other destinations

envision ports and supply chain routes that will attract investment and good jobs, including emerging opportunities such as offshore wind power generation

2050

Maine's Long-Range
Transportation Plan

2050

Maine's Long-Range
Transportation Plan



www.MaineDOT.gov



OUR
MISSION

To support economic opportunity and quality of life by responsibly providing our customers the safest and most reliable transportation system possible, given available resources.

207-624-3000 | [Jobs](#) | [News](#) | [Events](#) |



Search

[Doing Business](#) ▾

[Government](#) ▾

[Residents](#) ▾

[Explore Maine](#) ▾

[About](#) ▾

[Jobs](#)



Resources



[Click here to view the 2022 Edition of MaineDOT's Three-Year Work Plan](#)

[Community-Based Initiatives](#)

[Long-Range Transportation Plan Update](#)

[MaineDOT Statewide Transportation Improvement Program \(STIP\)](#)

[Maine's COVID-19 Website](#)

[MaineDOT's Continuity of Operations Plan \(Updated 06/16/2021\)](#)

[MaineDOT's New Bidding Protocol](#)



MaineDOT

2050

Maine's Long-Range
Transportation Plan



June 7th 2022 at 1:00PM



On Demand Public Meeting

MaineDOT will have an on-demand presentation available during development of these plans. This meeting will give information about the proposed project, including video presentations and other pertinent information to help the public understand the project. These on-demand meetings allow for increased engagement and convenient viewing at any time. The meeting also provides the ability for online comments and questions that will be answered by MaineDOT staff.

➡ [PREREGISTER FOR THE JUNE 7TH LIVE PUBLIC MEETING HERE.](#)

Watch the On-Demand Meeting by clicking below

➡ [Desktop](#)

[Mobile](#)



Village Partnership Initiative (VPI)

- MaineDOT has always focused and will continue to focus on the getting there.
- We are adding focus on the there, the places that make Maine special.
 - VPI-Small
 - VPI- Transformative
- Bipartisan Infrastructure Law (IIJA)
 - 28% increase in formula funds offsetting 30-40% inflation for last 3-year Work Plan
 - **Expanded grants will open new doors for this type of investment**



Village Partnership Initiative Cont'd

Large Transformative

\$4 Million a Year Current WP

- \$10M+ Type Improvements
- Village Downtown Reconstruction
- Human Scale
- Support Broadband Where Applicable

Small Spot Improvements

\$1 Million a Year Current WP

- Safety
- Gateway Treatments
- Traffic Calming
- Complete Streets
- Parking
- ADA Compliance

Recent Examples:

*Naples Causeway, Woodfords Corner Portland, Hallowell, Belgrade Lakes Village, Ogunquit **Sanford***



What is a Village?

Village Centers and Downtowns are mixed-use areas that serve the surrounding community(ies) with goods, services, and housing and have at least one civic or religious facility. Village Centers and Downtowns, when built, will be at least a half mile in length, have design characteristics supporting vehicular speeds of 30 mph or less, be built on a human scale making them walkable and bikeable for patrons and residents, and have broadband available. Villages should be the focal point of a community and should reflect the personality, character and history of that community. Some Maine municipalities may have multiple village centers that serve distinct communities within the municipality.

Local Vision with MaineDOT's Technical and Safety Expertise

- 1) Town or City has a vision for their Village or Downtown and are willing to partner.
- 2) MOU for a Planning Study
- 3) Planning Study
- 4) Preliminary Design
- 5) Apply for Grants of CDS
- 6) Final Design
- 7) Construction



Community Based Initiatives



OUR
MISSION

To support economic opportunity and quality of life by responsibly providing our customers the safest and most reliable transportation system possible, given available resources.

207-624-3000 | [Jobs](#) | [News](#) | [Events](#) |



Search

[Doing Business](#) ▾

[Government](#) ▾

[Residents](#) ▾

[Explore Maine](#) ▾

[About](#) ▾

[Jobs](#)



Resources



[Click here to view the 2022 Edition of MaineDOT's Three-Year Work Plan](#)

[Community-Based Initiatives](#)

[Long-Range Transportation Plan Update](#)

[MaineDOT Statewide Transportation Improvement Program \(STIP\)](#)

[Maine's COVID-19 Website](#)

[MaineDOT's Continuity of Operations Plan \(Updated 06/16/2021\)](#)

[MaineDOT's New Bidding Protocol](#)



Community Based Initiatives



Let us help you reimagine and transform your community.

MaineDOT has a long history of partnering with local communities to develop programs and deliver projects that bring out a shared vision and accentuate shared priorities. While we will continue to invest in core infrastructure needs, we are now also allocating resources toward revitalizing the places that make Maine special: our iconic village centers and downtown areas.

While MaineDOT has traditionally worked to make sure "you can get there from here," the goal of our new Village Partnership Initiative is to make sure that once you get there, there is a place you want to be.



Village Partnership Initiative



Municipal Partnership Initiative



Planning Partnership Initiative



Business Partnership Initiative



Let's Take a Ride... (click below)



MaineDOT Regional Planners

- Steve Cole – Midcoast, Southern and South/Central Maine, Cell: 207-441-4803
- Matt Drost- Western Maine and Scenic Byways, Cell: 207-441-1879
- Jarod Farn-Guillette- Northern, North/Central and Eastern Maine. Native American Liaison, Cell: 207-215-9558
- Patrick Adams, Active Transportation, Cell: 207-592-0873

